

How To Create a Profile

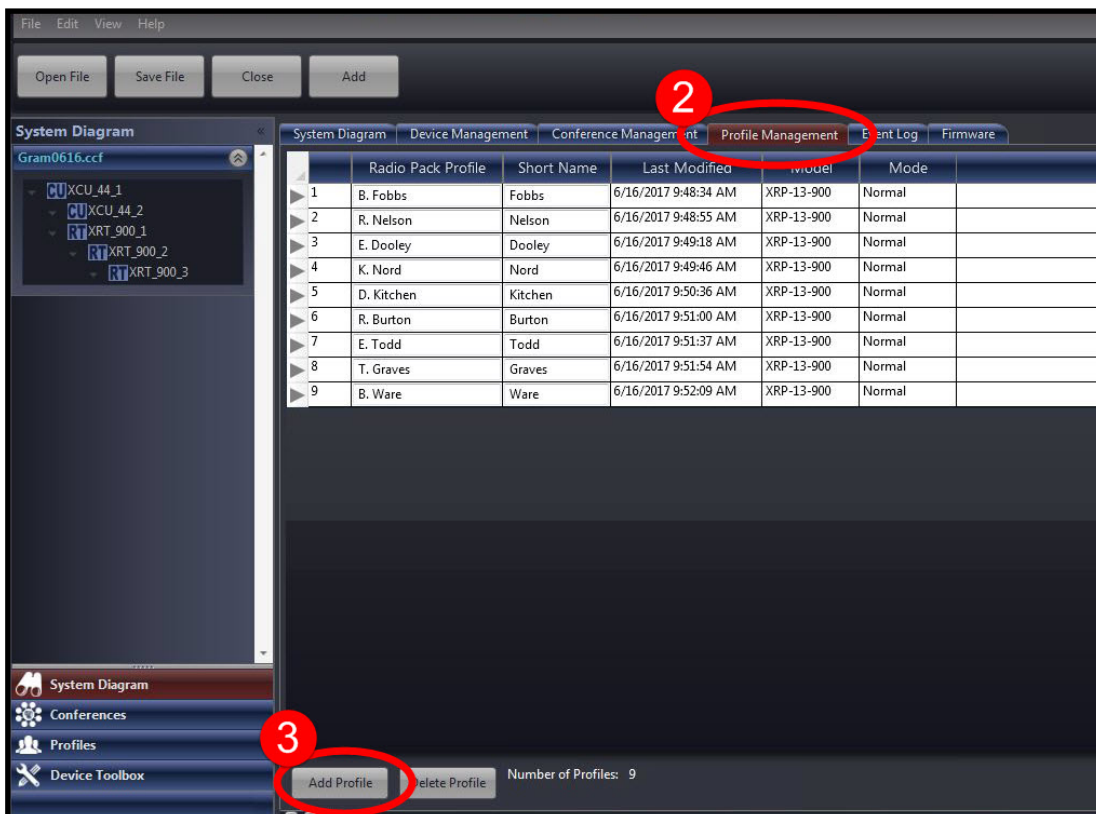
Use the steps outlined below to create a new Profile in X-Ware. If you have any questions or trouble performing this procedure, call CoachComm's Customer Support at 1.800.749.2761.

1. Launch X-Ware, then click the gear icon located at the top right of the home screen. This will launch X-Ware's Advanced Settings window, which will display several navigation options and a diagram of your system.



Gear Icon

2. Locate the **Profile Management** tab along the top of the screen and click on it. A list view of all existing profiles in your configuration will display.
3. Click the **Add Profile** button at the bottom of the screen. A new profile will be added to the bottom of the list with a default name.



Profile Management Tab Steps

- Double-click on the new profile to open the Profile Details screen.

	Radio Pack Profile	Short Name	Last Modified	Model	Mode	
1	B. Fobbs	Fobbs	6/16/2017 9:48:34 AM	XRP-13-900	Normal	
2	R. Nelson	Nelson	6/16/2017 9:48:55 AM	XRP-13-900	Normal	
3	E. Dooley	Dooley	6/16/2017 9:49:18 AM	XRP-13-900	Normal	
4	K. Nord	Nord	6/16/2017 9:49:46 AM	XRP-13-900	Normal	
5	D. Kitchen	Kitchen	6/16/2017 9:50:36 AM	XRP-13-900	Normal	
6	R. Burton	Burton	6/16/2017 9:51:00 AM	XRP-13-900	Normal	
7	E. Todd	Todd	6/16/2017 9:51:37 AM	XRP-13-900	Normal	
8	T. Graves	Graves	6/16/2017 9:51:54 AM	XRP-13-900	Normal	
9	B. Ware	Ware	6/16/2017 9:52:09 AM	XRP-13-900	Normal	
10	RPPProfile1	RPP1	12/1/2017 8:35:21 AM	XRP-13-900	Normal	

Opening New Profile

System Diagram | Device Management | Conference Management | **Profile Management** | Event Log | Firmware

Profile Name: **RPPProfile1** Last Modified: 12/1/2017 8:35:21 AM

Short Name: **RPP1** [List View] [Clone Profile] [Upload Changes] [Previous] [Next]

Global Profile Settings:

Model: XRP-13-900 Scan List:

ID	Radio Transceiver
1	XRT_900_1
2	XRT_900_2
3	XRT_900_3
255	
255	
255	
255	

Mode: Normal

Talk Button Mode: Disable

Call Alert: Vibrate

Transmit Power: 24 dBm

Antenna Diversity: RSSI

Conference A Conf: ' ' Mode: 'Disable' CallOnTalk: 'Off' ISO: 'Enabled'

Conference: [Dropdown] Min Vol: 0 Max Vol: 20

Conference B Conf: ' ' Mode: 'Disable' CallOnTalk: 'Off' ISO: 'Enabled'

Conference: [Dropdown] Min Vol: 0 Max Vol: 20

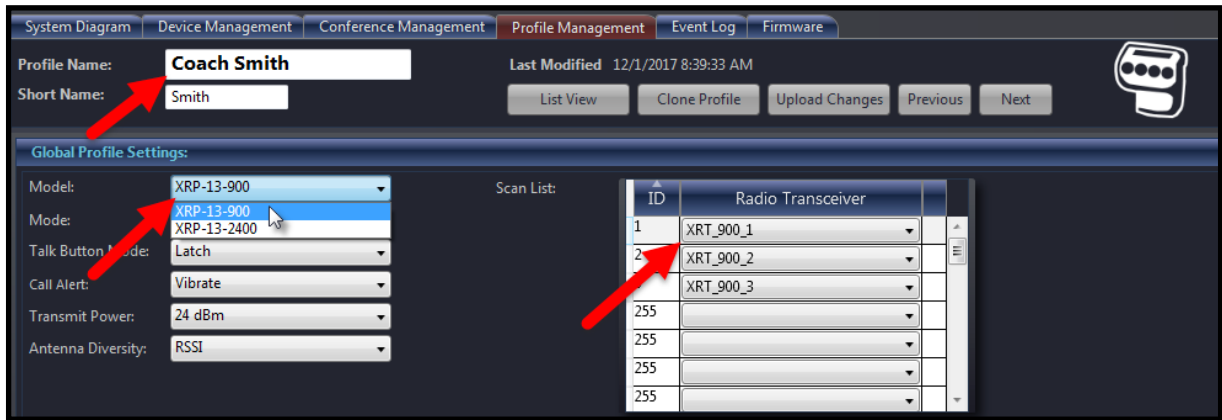
Conference C Conf: ' ' Mode: 'Disable' CallOnTalk: 'Off' ISO: 'Enabled'

Conference: [Dropdown] Button Mode: Disable Min Vol: 0 Max Vol: 20

Profile Detail with Default Settings

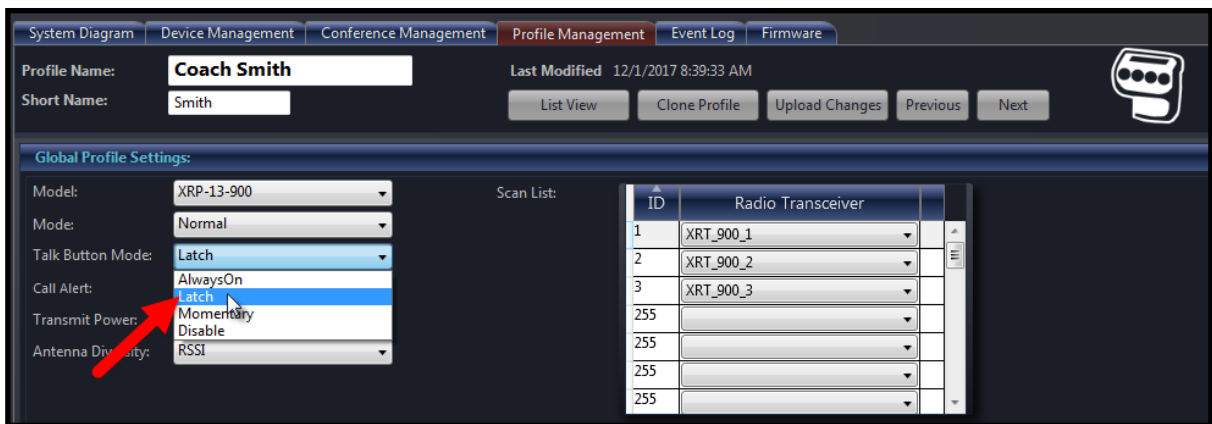
- Customize the Profile from the Profile Details screen, paying special attention to the settings detailed on pages 3 and 4:

- **Profile Name and Short Name:** Type your preferred Profile name and abbreviated version into the appropriate fields at the top of the screen.
- **Model:** Select the appropriate RP model from the drop-down list. Once you make a selection, the scan list will update with the RTs of the same frequency.



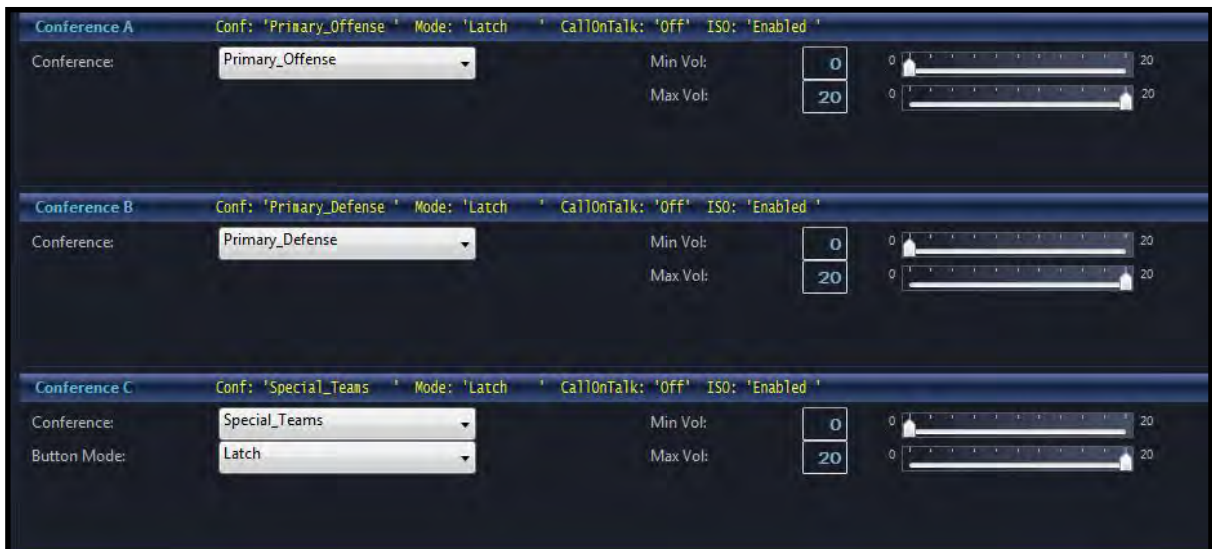
Recommended Model Setting

- **Talk Button Mode:** Select **Latch** from this drop-down menu.

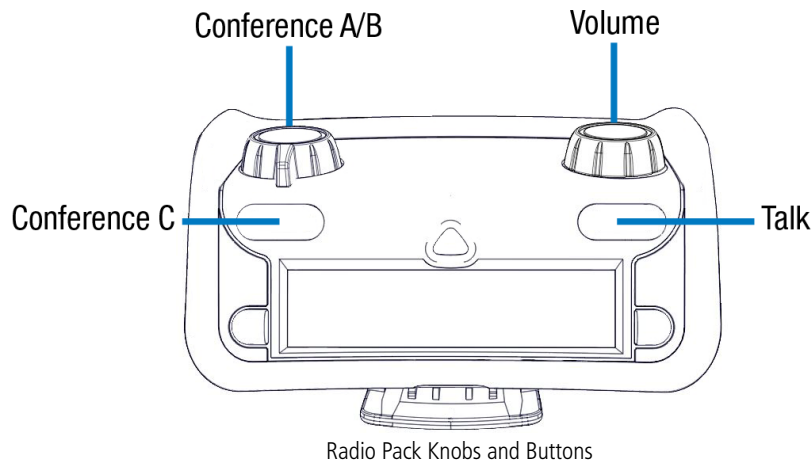


Recommended Talk Button Mode Setting

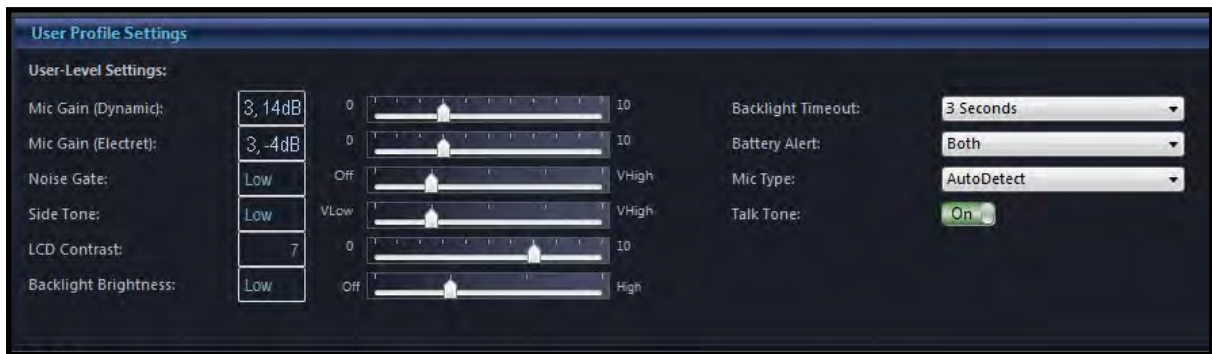
- **Conferences:** Select a Conference for each of the knobs/button on the Radio Pack. A diagram of an RP is provided on the next page.



Drop-Down Fields for Conferences A, B, and C



- **User Level Settings:** The Dynamic and Electret Mic Gain, Noise Gate, Side Tone, LCD Contrast, and Backlight Brightness fields in the image below depict CoachComm's recommended settings. You can customize them differently if desired.



Recommended User Level Settings

6. When you have finished determining your Profile settings, click the **List View** button at the top of the Profile Detail screen.
7. Go to **File** and click **Save System Configuration As...** and save your file to your USB drive.
Note: The file name must be 8 characters or less! It may be helpful to use school and date in the name. For example, ASU1104, BAY1031, etc.
8. Once the file has been saved to your USB drive, you can exit X-Ware and eject your USB drive from the computer. Follow the instructions in the "Loading a Configuration File" section of the [X-System Manual](#) to load your CoachComm Configuration File (CCF) to the primary (top) CU and begin using your new Profile.